



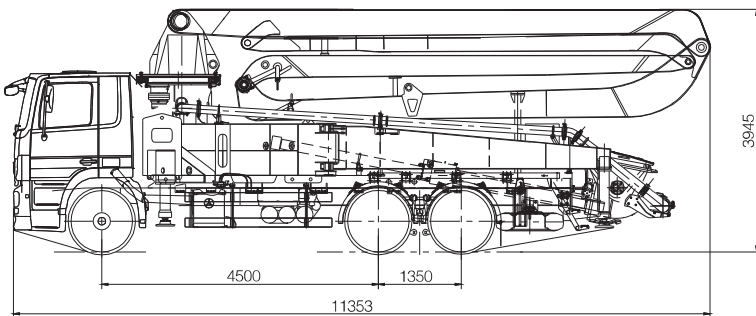
## 40X-5RZ

### TRUCK-MOUNTED CONCRETE PUMP

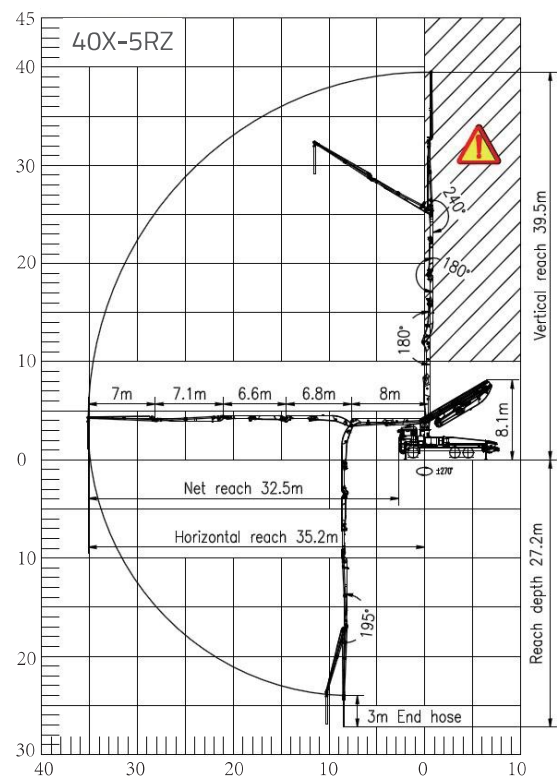
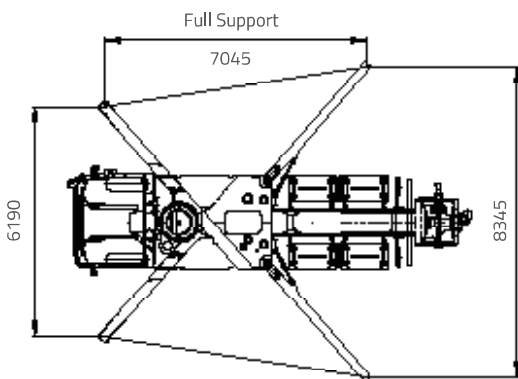
|              |             |
|--------------|-------------|
| Placing boom | B5RZ 40     |
| Pumping unit | PU1607      |
| Driven by    | Gearbox PTO |
| Chassis      | 3/4 axles   |



### Dimensions, Reach Information Diagram, Support



Dimensions varying according to truck assembly





# 40X-5RZ

## TRUCK-MOUNTED CONCRETE PUMP

|              |             |
|--------------|-------------|
| Placing boom | B5RZ 40     |
| Pumping unit | PU1607      |
| Driven by    | Gearbox PTO |
| Chassis      | 3/4 axles   |

### Main Feature

- Boom intelligent damping technology: The soft control of booms in starting, slewing and stopping reduces the impacting vibration of booms and therefore makes the vehicle operate more stably, reliably and safely.
- Accurate pumping control technology(APC): Great leap of pumping accuracy and adaptability, improving pump efficiency.
- Adaptive concrete material pumping technology: Improve pumping control system for poor concrete with segregation and big viscosity, and auto-adaptive pumping mode, reducing the block rate by more than 50%.
- Dual-pump and dual-loop hydraulic system: Less hydraulic impact, High efficiency, Low failure rate.
- Three-stage fault diagnosis: boot self-check, process self-check and shutdown detection is adopted to realize the overall control of the product's health condition.
- Long life wearing parts: Reduce working cost remarkably. Continuously improve wearing part's life by using new material, new process and new designing.

### Standard Equipment

- Compact in design, 40m pump mounted on 3-axles truck.
- Efficient pump unit, ideal for long time use.
- Agile placing boom with 5 arms with unfolding height 8.1m only, which gives a wide work range.
- Proportional radio controls with two speeds boom movement, automatic frequency scanner.
- Double thickness concrete pipes hardened.
- Centralized lubrication system for pumping unit.
- Hard carbide wear plate and cutting ring for PU pumping units.
- Fiberglass hopper covering.
- Use & Maintenance Manuals.
- Spare parts and service Manual.

### Optional

- Chassis brand : Mercedes-Benz, Sinotruk, FAW ect.
- Other configuration on demand.

### Placing Boom Technical Data

| Model   |               |    | 40X-5RZ |
|---|---------------|----|---------|
| Pipeline diameter   |               | mm | 125     |
| Maximum vertical reach                                    |               | m  | 39.5    |
| Maximum horizontal distance (from center of slewing axis) |               | m  | 35.2    |
| Minimum unfolding height                                  |               | m  | 8.1     |
| Section numbers   |               |    | 5       |
| 1st section   | Length        | mm | 8000    |
|   | Opening angle |    | 90°     |
| 2nd section   | Length        | mm | 6820    |
|   | Opening angle |    | 180°    |
| 3rd section   | Length        | mm | 6550    |
|   | Opening angle |    | 180°    |
| 4th section   | Length        | mm | 7130    |
|   | Opening angle |    | 240°    |
| 5th section   | Length        | mm | 7000    |
|   | Opening angle |    | 195°    |
| Rotating angle  |               |    | ±270°   |
| End hose length   |               | m  | 3       |

### Pumping Unit Technical Data

| Model                            |  |                   | PU1607   |
|----------------------------------|--|-------------------|----------|
| Maximum theoretical output       |  | m <sup>3</sup> /h | 160/100  |
| Maximum pressure on concrete     |  | bar               | 70/110   |
| Conc. cylinders (diam. x stroke) |  | mm                | 230x2100 |
| Concrete hopper capacity         |  | L                 | 600      |
| Hydraulic circuit                |  |                   | Open     |

